



GOLD STONE

— DIGGING TO ACHIEVE YOUR NEEDS —

ALFALFA SPECIFICATION

Alfalfa Hay bales (Double press):

Alfalfa Hay bales (Double press) - Bale Weight (20 Kgs Plus or minus 10%)

Packing: Bale Weight (20 Kgs plus or minus 10%) strapped with nylon or iron wires.

The Alfalfa bales are pure and free from mold, bad color or bad smell. Free from Foreign materials, sands, soil, any other plants or forages, insects, preservatives, any seeds, poisonous or animal non -healthy products or any other materials.

Alfalfa is not produced by genetic engineering and be free from radiations.

General specs, terms and conditions

Color visual Light Green, Fresh crop year

Moisture: Maximum 12 %

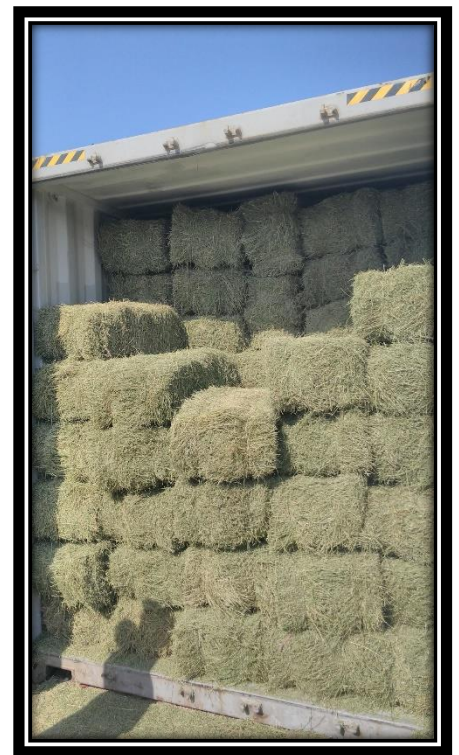
Dray Matter: Minimum 89 %

ADF: Maximum 30%

NDF: Maximum 40%

Flowering Level: Not more than 7%.

Aflatoxin: Maximum 9 pbb



HQ Address: #536 Mohammed Nagib Axis, New Cairo 1, Cairo, Egypt. P.O: 11865

Factory Address: Block D #23 & 24, The Third Cell, The Third Sector, The Industrial Zone in Al-Matahra, Minya Governorate, Egypt.

Tel: +20 2 23278264 - +201032566099 - +201006278723

Email: export@goldstone.com.eg